



PORTLAND • TIGARD • TUALATIN

**Corridor**

Light Rail Project

# Southwest Corridor Plan Overview

TriMet Board Retreat

November 9, 2016

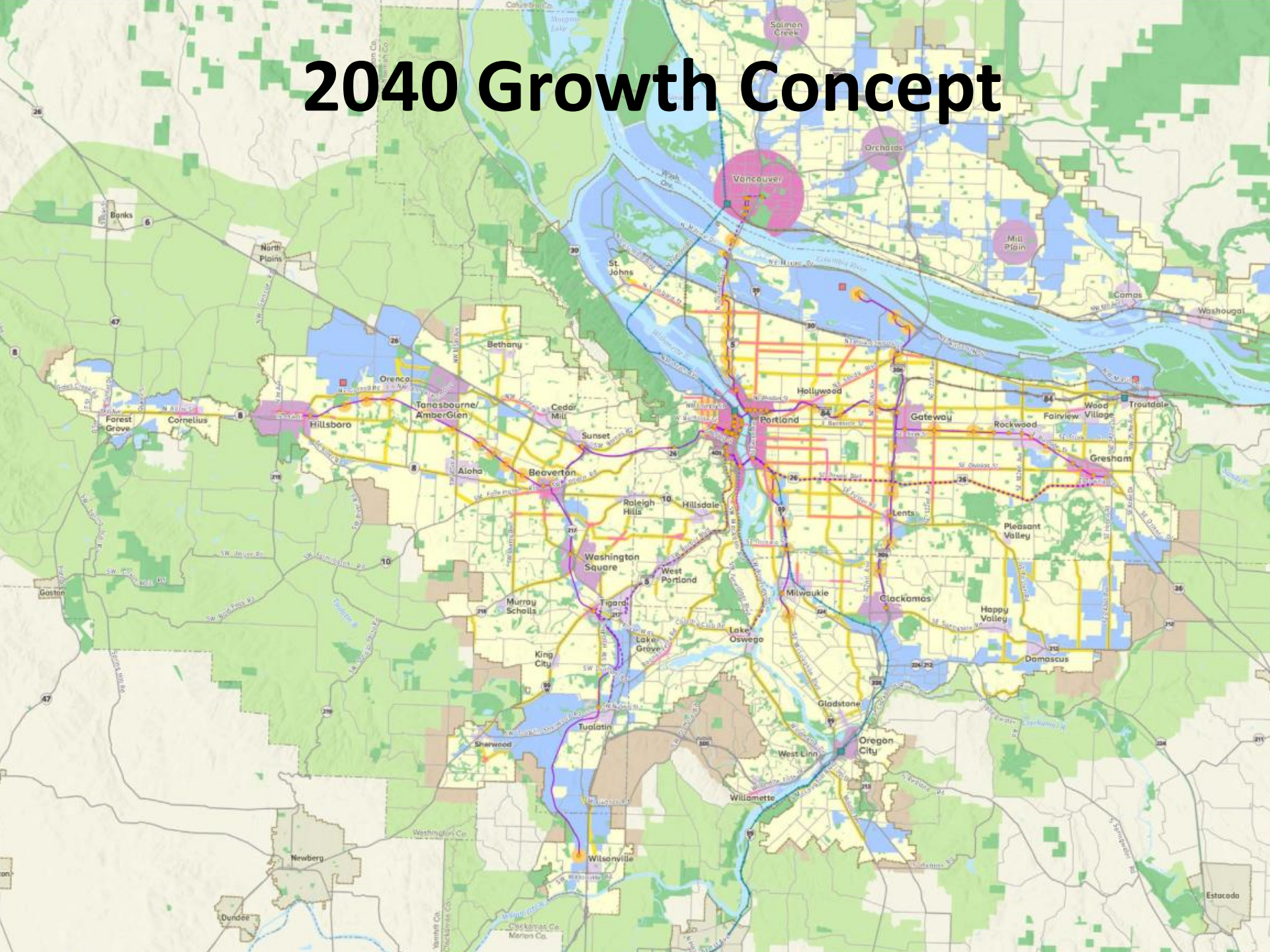


G R E A T P L A C E S

# Corridor

Portland • Sherwood • Tigard • Tualatin  
Beaverton • Durham • King City  
Washington County • ODOT • TriMet • Metro

# 2040 Growth Concept

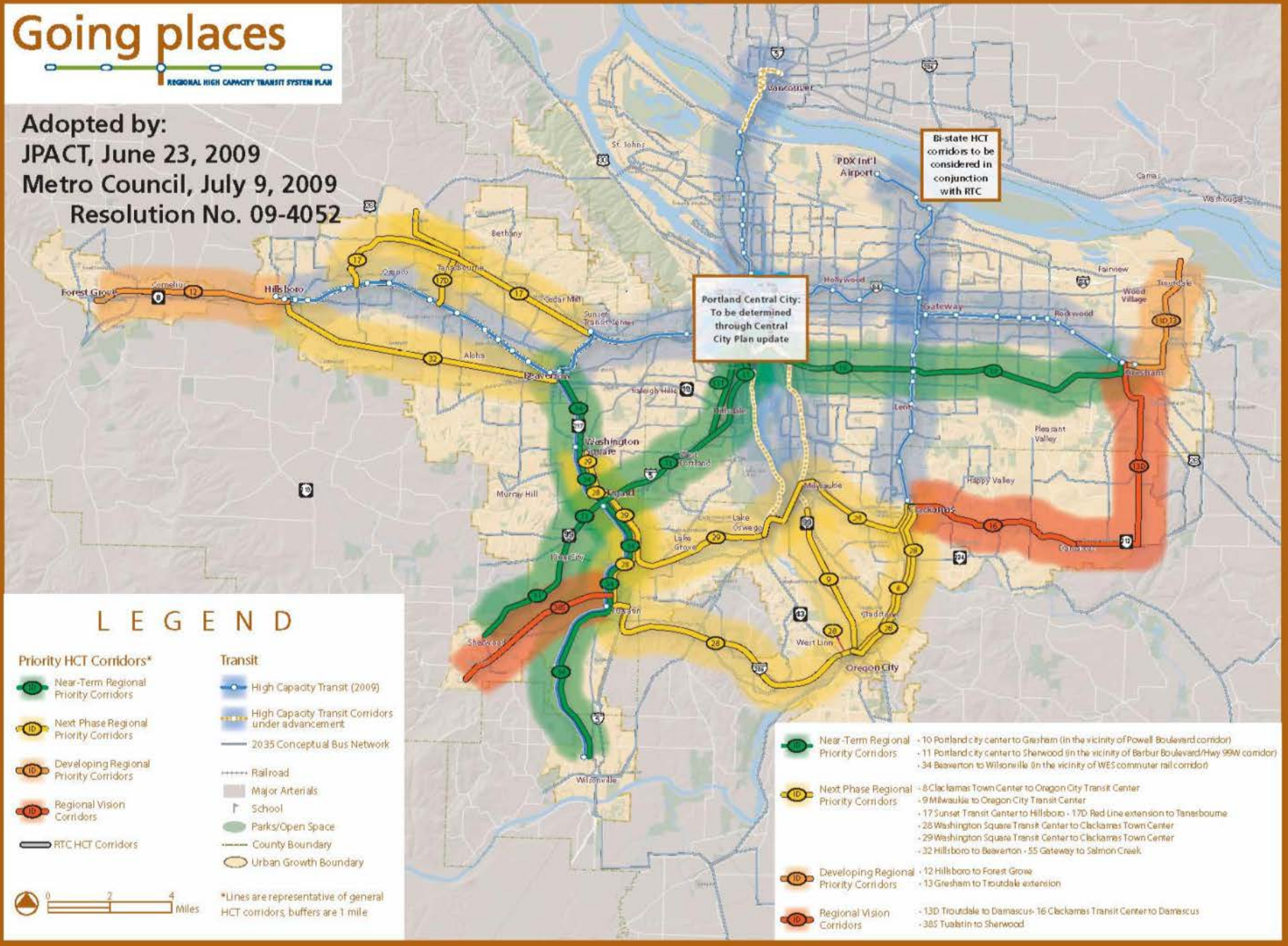




# Going places



Adopted by:  
**JPACT, June 23, 2009**  
**Metro Council, July 9, 2009**  
**Resolution No. 09-4052**



Bi-state HCT corridors to be considered in conjunction with RTC

Portland Central City: To be determined through Central City Plan update

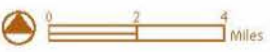
## LEGEND

### Priority HCT Corridors\*

- Near-Term Regional Priority Corridors
- Next Phase Regional Priority Corridors
- Developing Regional Priority Corridors
- Regional Vision Corridors
- RTC HCT Corridors

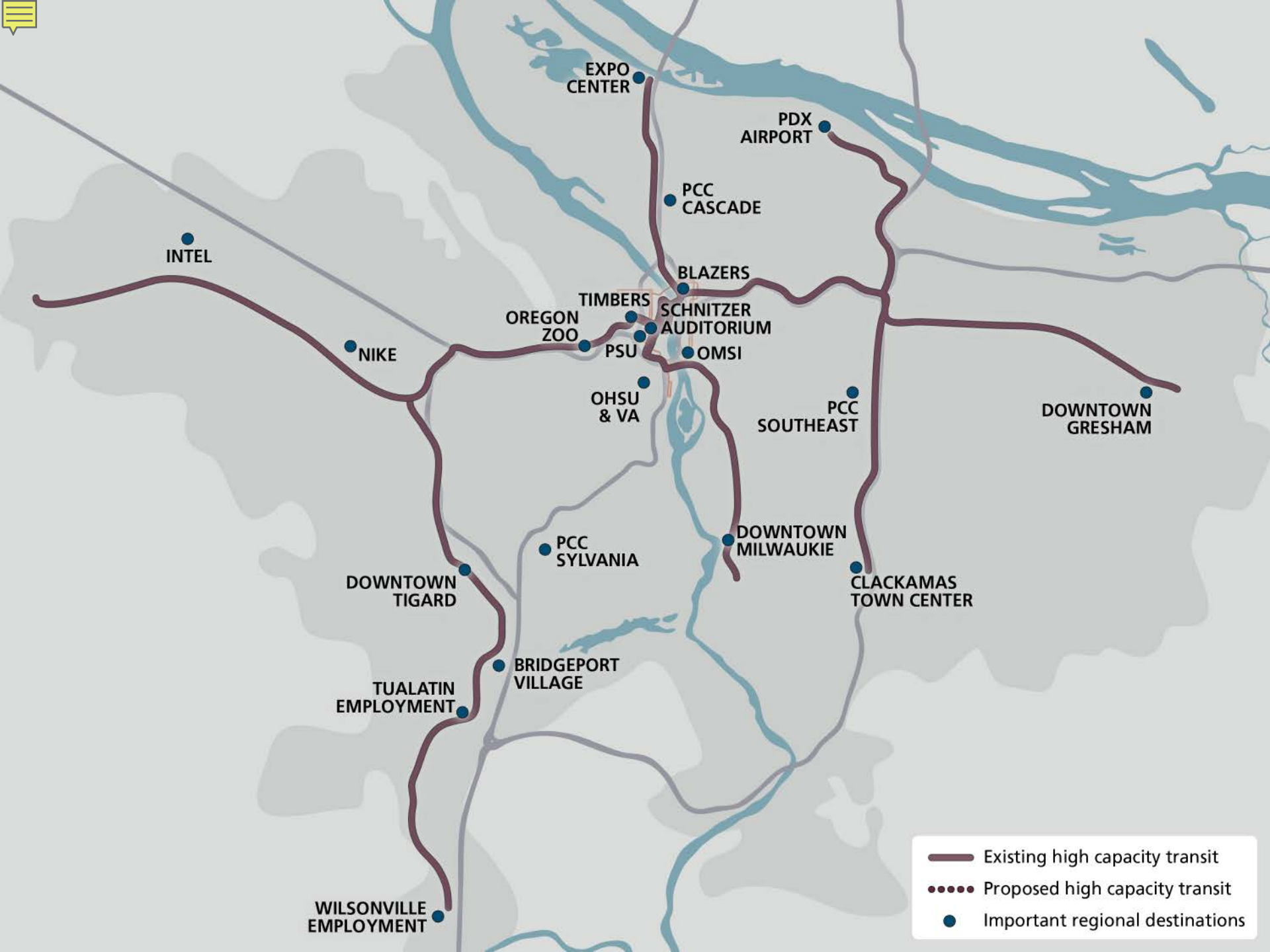
### Transit

- High Capacity Transit (2009)
- High Capacity Transit Corridors under advancement
- 2035 Conceptual Bus Network
- Railroad
- Major Arterials
- School
- Parks/Open Space
- County Boundary
- Urban Growth Boundary



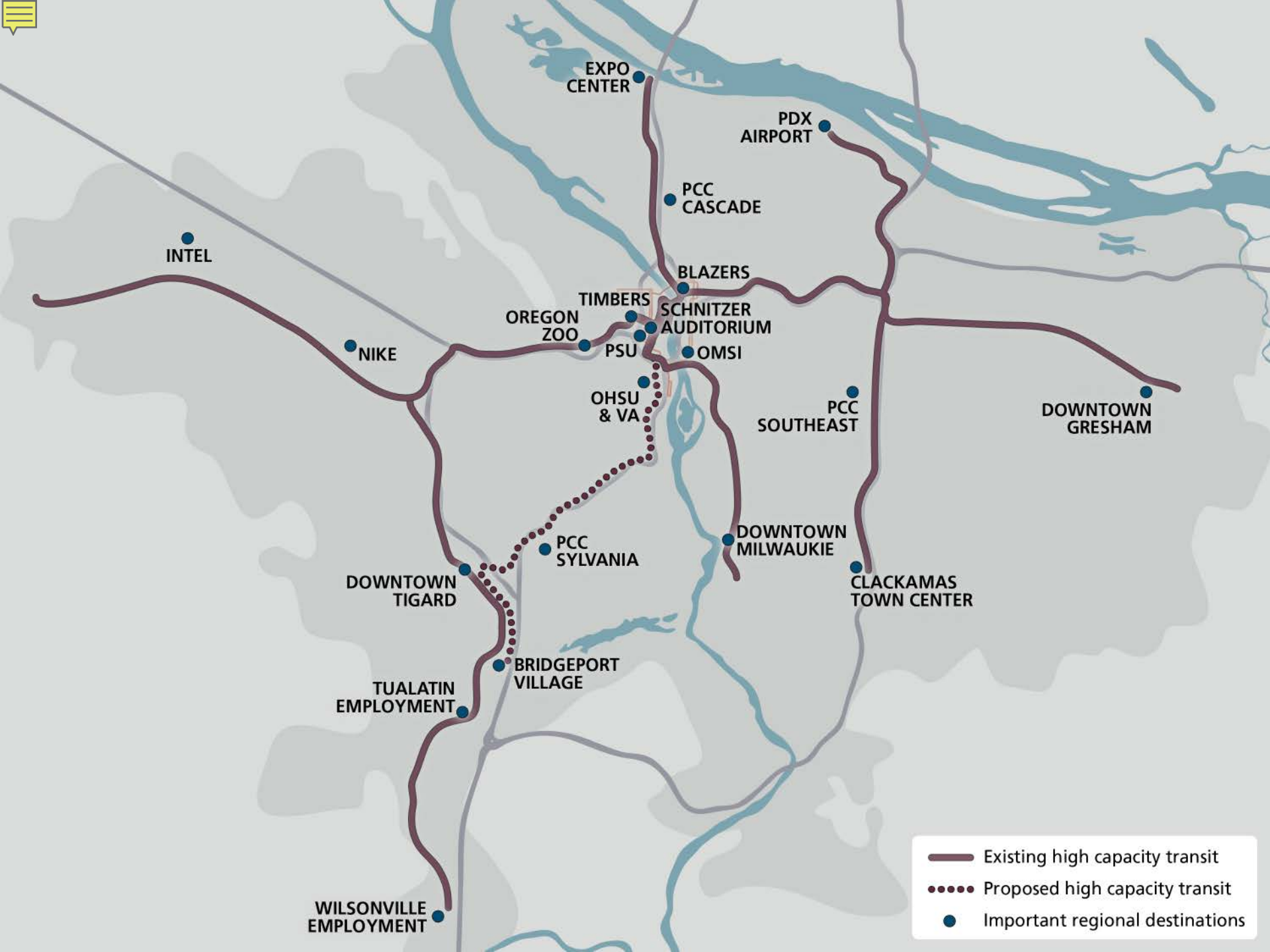
\*Lines are representative of general HCT corridors; buffers are 1 mile

- Near-Term Regional Priority Corridors
  - 10 Portland city center to Gresham (in the vicinity of Powell Boulevard corridor)
  - 11 Portland city center to Sherwood (in the vicinity of Barbur Boulevard/Hwy 99W corridor)
  - 34 Beaverton to Wilsonville (in the vicinity of WES commuter rail corridor)
- Next Phase Regional Priority Corridors
  - 8 Clackamas Town Center to Oregon City Transit Center
  - 9 Milwaukie to Oregon City Transit Center
  - 17 Sunset Transit Center to Hillsboro - 17D Red Line extension to Tanesbourne
  - 28 Washington Square Transit Center to Clackamas Town Center
  - 29 Washington Square Transit Center to Clackamas Town Center
  - 32 Hillsboro to Beaverton - 55 Gateway to Salmon Creek
- Developing Regional Priority Corridors
  - 12 Hillsboro to Forest Grove
  - 13 Gresham to Troutdale extension
- Regional Vision Corridors
  - 13D Troutdale to Damascus - 16 Clackamas Transit Center to Damascus
  - 38S Tualatin to Sherwood



- Existing high capacity transit
- Proposed high capacity transit
- Important regional destinations







There could be 300,000 residents  
in the Southwest Corridor by 2040—

**75,000**

**more than today.**

[swcorridorplan.org](http://swcorridorplan.org)







240,700

people:

If all the people who work in the Southwest Corridor were their own city, they'd be bigger than Eugene.

[swcorridorplan.org](http://swcorridorplan.org)





**55%**

**of Barbur Boulevard**

doesn't have a sidewalk on both sides.

The Southwest Corridor Plan would fix that.

[swcorridorplan.org](http://swcorridorplan.org)



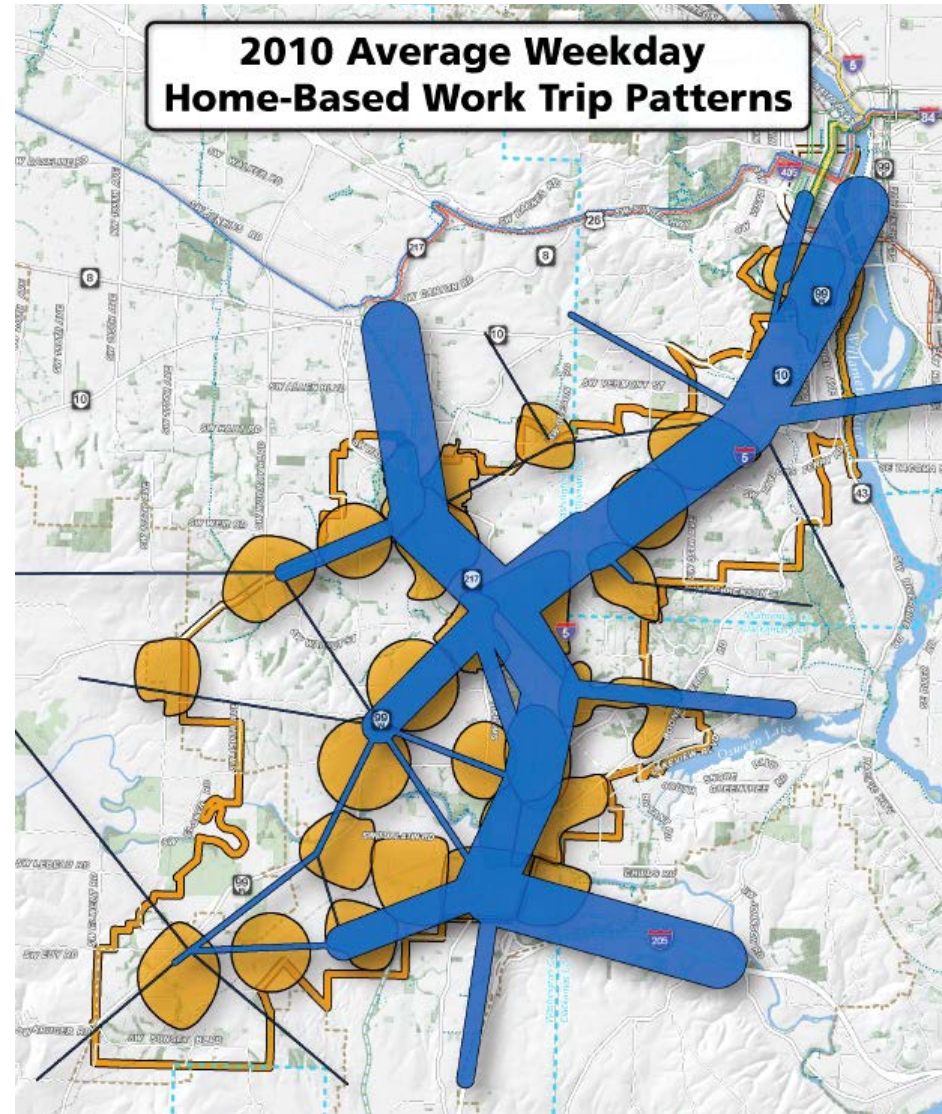
**Travel demand in and through SW Corridor is high**

**Congestion is growing**

**Travel time is increasingly unreliable**

**Terrain constrains capacity**

**Local bus service cannot meet projected demand**







**Why here?**

**Why now?**

Quality of life in the Southwest Corridor is compromised by traffic gridlock and a lack of mobility and connections for communities for people driving, taking transit, walking, or biking. • Improvements to local land use

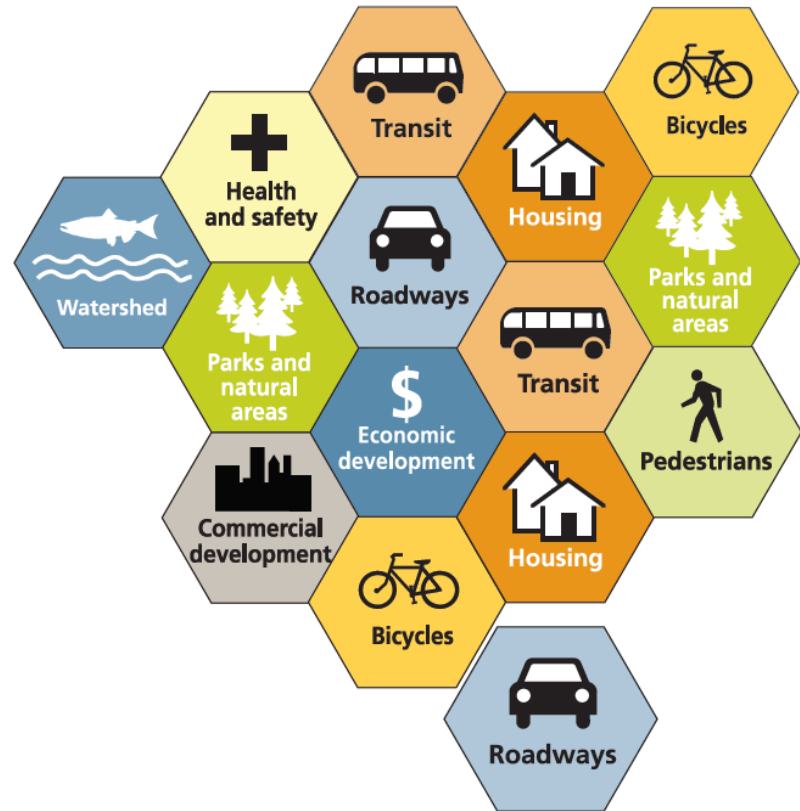
**GREAT PLACES**  
**SW Corridor**  
Portland • Skowhegan • Fugate • Buxton  
Beverly • Durham • King City  
Washington County • ODOT • TriMet • Metro



# Project Foundations



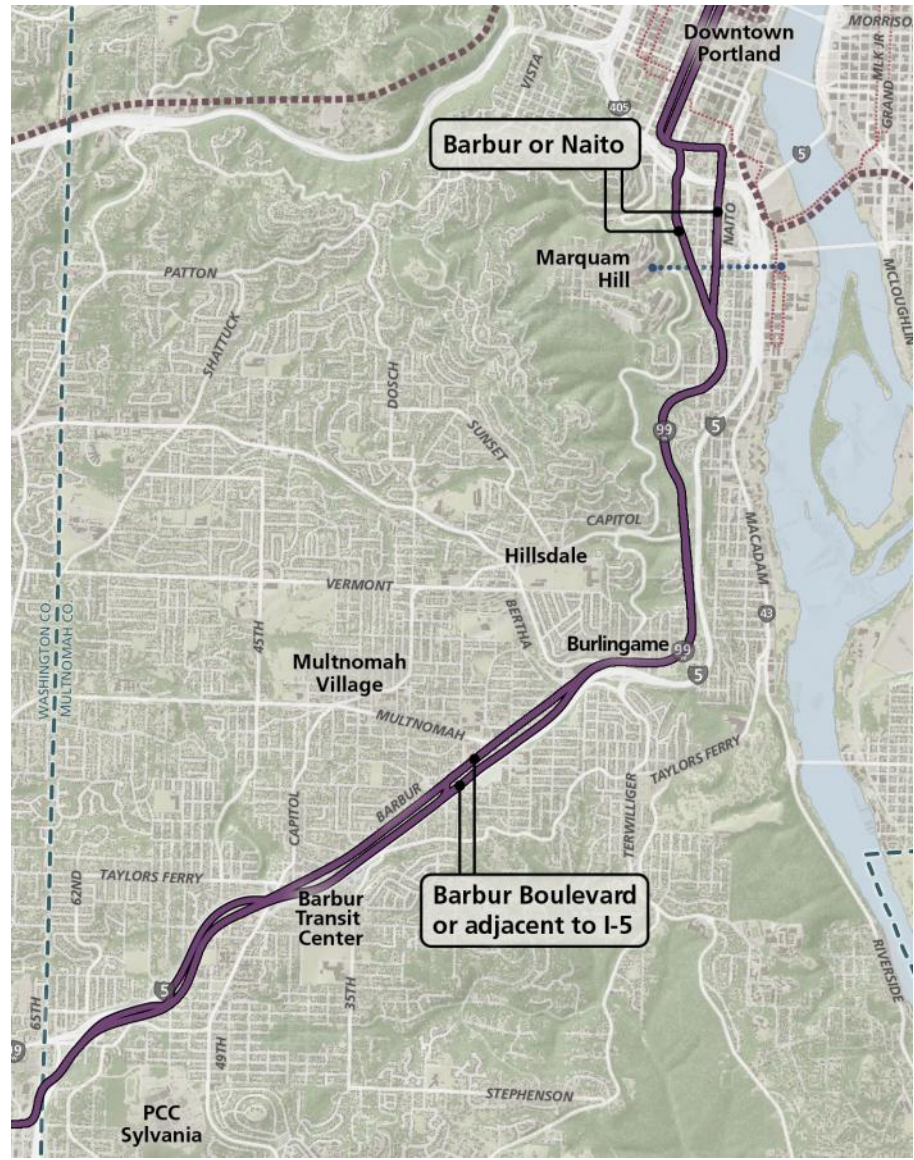
**Land Use Vision**



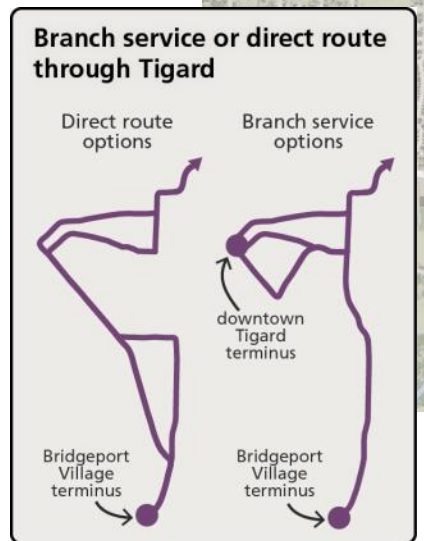
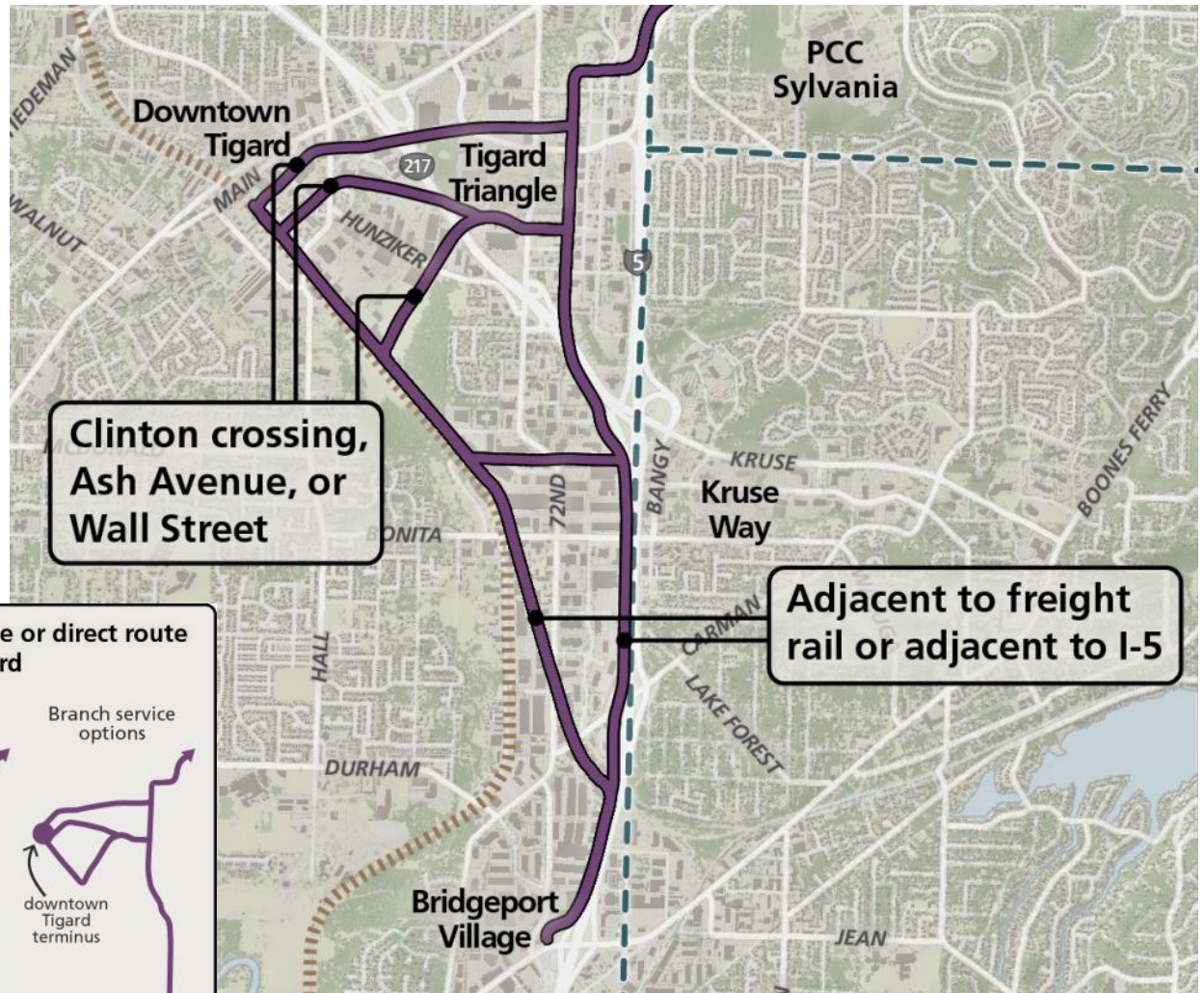
**Shared Investment Strategy**



# LRT options: Portland



# LRT options: Tigard and Tualatin

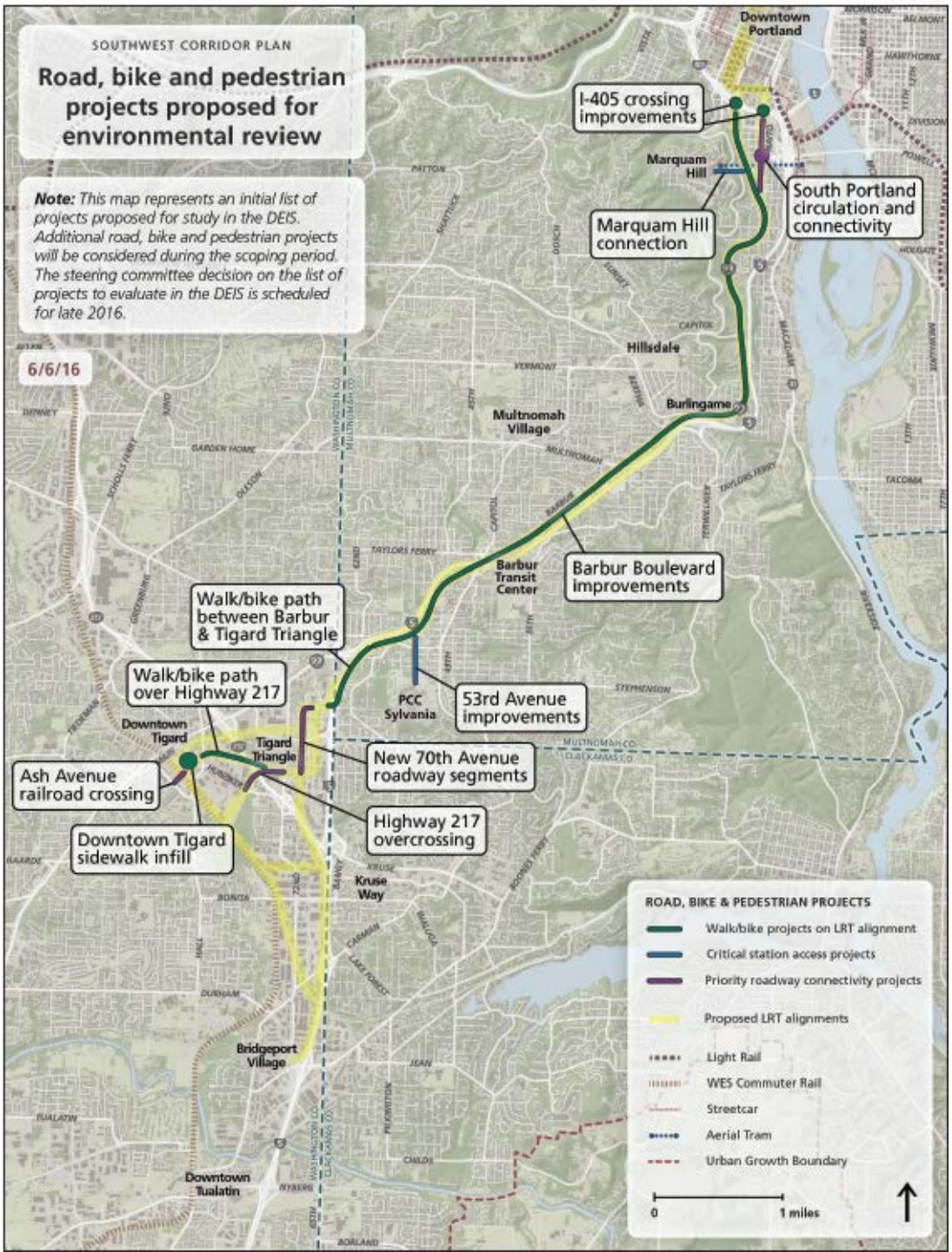




**SOUTHWEST CORRIDOR PLAN**  
**Road, bike and pedestrian projects proposed for environmental review**

*Note: This map represents an initial list of projects proposed for study in the DEIS. Additional road, bike and pedestrian projects will be considered during the scoping period. The steering committee decision on the list of projects to evaluate in the DEIS is scheduled for late 2016.*

6/6/16



**ROAD, BIKE & PEDESTRIAN PROJECTS**

- Walkbike projects on LRT alignment
- Critical station access projects
- Priority roadway connectivity projects
- Proposed LRT alignments
- ⋯ Light Rail
- - - WES Commuter Rail
- ⋯ Streetcar
- ⋯ Aerial Tram
- - - Urban Growth Boundary

0 1 miles

↑

# Project benefits

## TRANSIT

- Over 45,000 rides/day (2035)
- Carry about 1 in 4 workers on I-5
- 14 potential stations with up to 3,000 park and ride spaces
- New/updated transit centers
- Coordinated with near term Transit System Enhancement improvements



# Project benefits

## MOBILITY

- Bike lanes and sidewalks
  - ◆ Network gaps filled
  - ◆ New connections to stations
- New roadway connections
  - ◆ SW 70<sup>th</sup> Ave in the Tigard Triangle
  - ◆ Bridge over Hwy 217

# Project benefits

## PLACES

- Redevelopment opportunities
  - ◆ historic Barbur, Tigard Triangle, downtown Tigard
- Housing opportunities
- Access to jobs and medical
- Colleges serving 45,000 students
  - ◆ OHSU, PCC, PSU, NUNM



# Preliminary financing strategy

- \$2-2.4b total project cost
- On par with LRT cost/mile nationally
- Goal: 50% FTA **New Starts**
  - ◆ Competitive discretionary grant
  - ◆ Projects cost of more than \$300m with FTA contributing up to 50%
  - ◆ Requires separate ROW treatment
  - ◆ **Small Starts** – Less than \$300m total cost and caps federal at \$100m

# Preliminary financing strategy

- Non-New Starts share: \$1 to \$1.2b
- Potential sources
  - ◆ Regional Flexible Funds - \$75-\$80m
  - ◆ Regional bond – Nov 2018
  - ◆ Lottery backed bonds
  - ◆ Construction period interest
  - ◆ TriMet, ODOT, Washington County, and cities



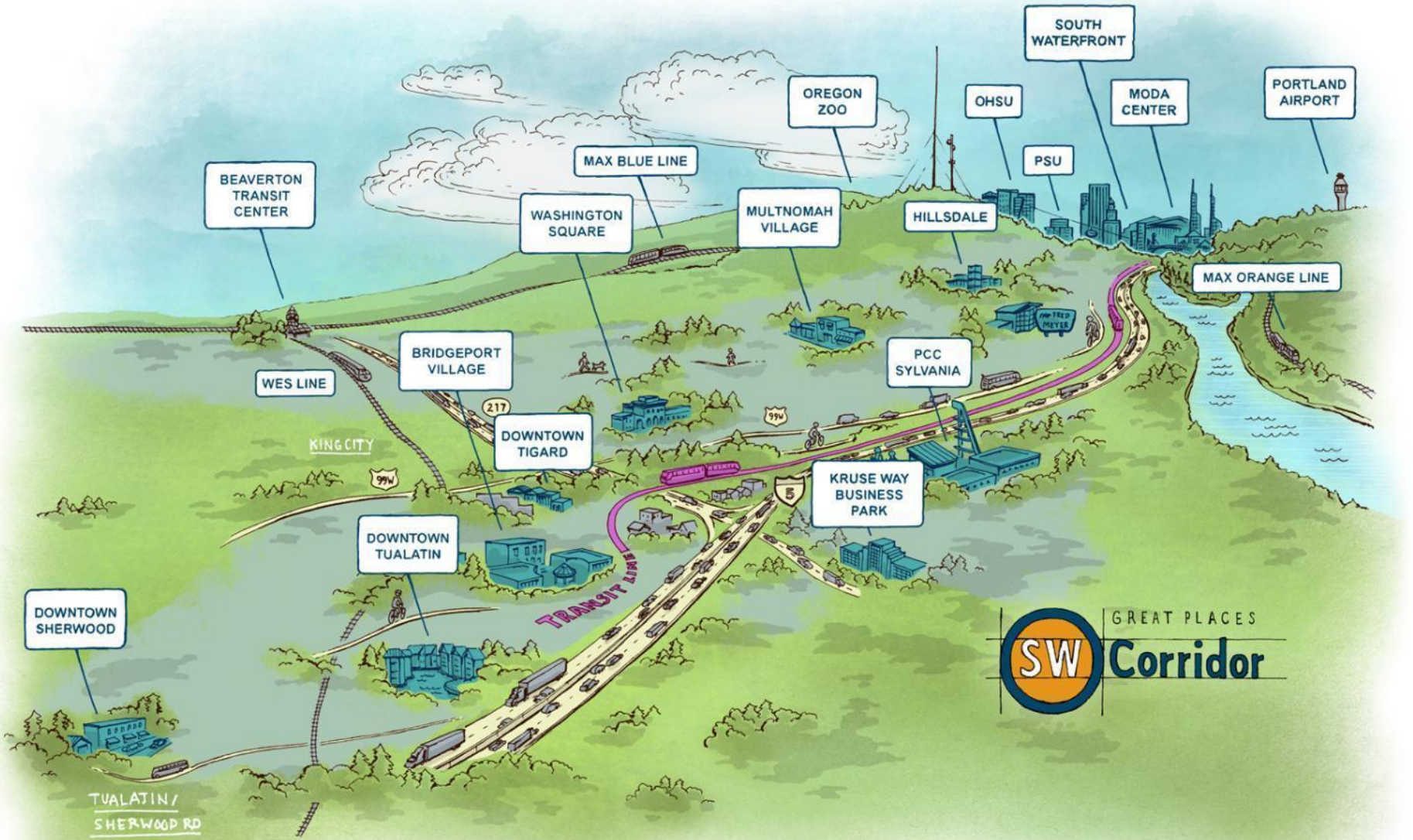
# Major Target Dates

- Dec 2016 Start environmental review
- Summer 2017 Enter Project Development
- Dec 2017 Publish draft environmental review
- Mar-May 2018 Confirm Locally Preferred Alternative
- Nov 2018 Possible regional funding vote
- August 2019 Submit for FTA project rating
- Dec 2020 Full Funding Grant Agreement
- 2021-2025 Construction
- 2025-26 Opening!

# Near term Board actions

- Spring 2017
  - ◆ Regional Flexible Fund IGA
  - ◆ Design contract for Environmental work
- Summer 2017
  - ◆ Request to Enter Project Development
- Winter 2018
  - ◆ Locally Preferred Alternative Adoption





GREAT PLACES  
**SW Corridor**